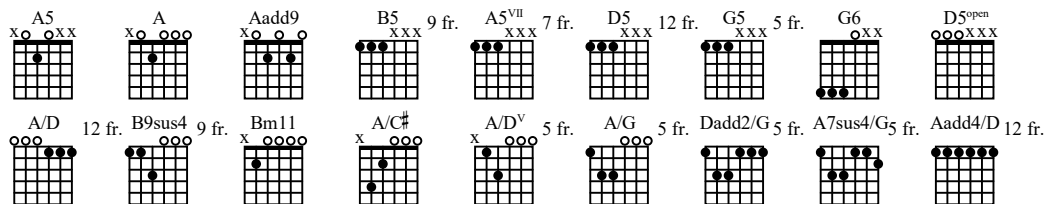


# WOUNDED

As recorded by Third Eye Blind

(From the 1999 Album BLUE)

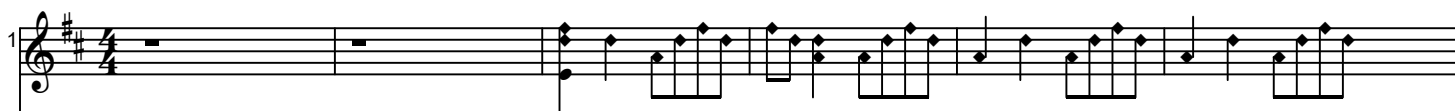


**A** Intro All Guitars tuned to: DAD EAC#

Moderately Slow ♩ = 83  
(A/D)

(A)

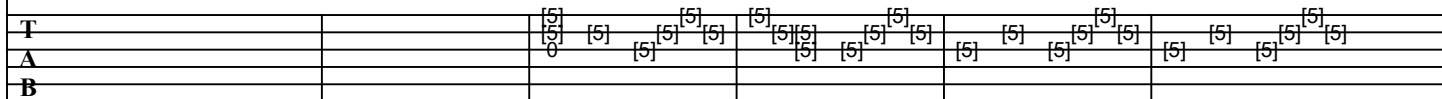
(A/D)



Key signature denotes A Mixolydian

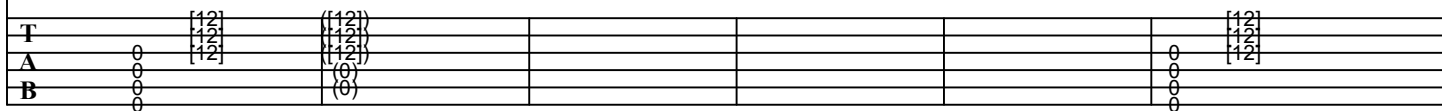
Gtr II *mf*

let ring  
N.H.



Gtr I *p* *mp*  
N.H.

*p*  
N.H.



(A)

Gtr III *f*  
let ring

N.H.

T  
A  
B

P P P P P P P

*mp*

N.H.

T  
A  
B

[12] ([12]) ([12]) [12] ([12])

**B Verse 1**

A/D

B9sus4

*mf*  
let ring

T  
A  
B

13

Gtr III

A5 A Aadd9 A A5 A Aadd9 A

Gtr II

N.H.

T [5] [5] [5] [5] [5] [5] [5] [5] [5] [5]

A [5] [5] [5] [5] [5] [5] [5] [5] [5] [5]

B [5] [5] [5] [5] [5] [5] [5] [5] [5] [5]

A/D B9sus4

15

Gtr III  
let ring

T	12	12	12	12	12	12	13	12	12	0	0	0	0	0	0	0	0	0	0	0
A	12	12	12	12	12	12	12	12	12	0	0	0	0	0	0	0	0	12	12	12
B	0	0	0	0	0	0	0	0	0	0	11	9	12	12	12	12	9	11	11	11

A5 A Aadd9 A A5 A Aadd9 A

17

Gtr III

T																				
A																				
B																				

A Bm11

19

Gtr III  
let ring

T	0	0	0	0	0	0	0	0	0	0	0	0	0	0	0	0	0	0	0	0
A	2	2	2	2	2	2	2	2	2	2	0	0	0	0	0	0	0	0	0	0
B	0	0	0	0	0	0	0	0	0	0	2	2	2	2	2	2	2	2	2	2

A/C#

21

let ring

T	0	0	0	0	0	0	0	0	0	0	0	0	0	0	0	0	0	0	0	0
A	2	2	2	2	2	2	2	2	2	2	0	0	0	0	0	0	0	0	0	0
B	4	4	4	4	4	4	4	4	4	4	5	5	5	5	5	5	5	5	5	5

N.H.

(A)

23

*f*  
let ring

T	5	5	0	5	0	0	5	(0)	0	5	5	0	5	0	0	5	(0)	0
A	5	5	0	5	0	0	5	0	0	5	5	0	5	0	0	5	0	0
B	0	0	0	0	0	0	0	0	0	0	0	0	0	0	0	0	0	0

P P P P



G5 G6 B5 A5<sup>VII</sup>

31

Gtr IV

T

A

B

Gtr IV

T

A

B

**D** Interlude

A A/G Dadd2/G A7sus4/G

33

Gtr IV

T

A

B

A/D A G5 D5

T

A

B

**E** Chorus

A A/G Dadd2/G A7sus4/G

37

T

A

B

39

A/D A G

Gtr IV

T 0 0 0 0 0 0 0 0 0 0 0 0 0 0 0 0 10 10 10 10 10 10 10

A 0 0 0 0 0 0 0 0 0 0 0 0 0 0 0 0 10 10 10 10 10 10 10

B 0 0 7

41

A A/G Dadd2/G A7sus4/G

T 0 0 0 0 0 0 5 0 0 0 0 0 0 0 0 0 5 5 5 5 5 5 5

A 0 0 0 0 0 0 0 0 0 0 0 0 0 0 0 0 5 5 5 5 5 5 5

B 7 7 7 7 7 7 7 7 7 7 7 7 7 7 7 7 5 5 5 5 5 5 5

43

A/D A G5 D5

Gtr IV

T 0

A 0

B 0 0 7 7 7 7 7 7 7 7 7 7 7 7 7 7 5 5 5 0 0 0 0

sl.

45

A

A/G

Dadd2/G

A7sus4/G

T

A

B

**F Verse 3**

49

A/D B9sus4 A5 A Aadd9 A A5 A Aadd9 A

*mp*

T  
A 5 (5)  
B 6 (6)

5

Gtr III  
*let ring*

The musical score for guitar III consists of a melodic line and a complex rhythmic accompaniment. The melodic line is written in treble clef with a key signature of one sharp (F#). It features a series of eighth and sixteenth notes, often beamed together, creating a fast, intricate melody. The rhythmic accompaniment is written in a 4/4 time signature and uses a variety of note values, including eighth, sixteenth, and thirty-second notes, as well as rests. The score is divided into measures by vertical bar lines. The overall style is highly technical and rhythmic, typical of modern guitar music.

[illegible]

57

A/D B9sus4 A5 A Aadd9 A

let ring-----|

T	12 12 12 12 12 12 12 12 12 0	0 0 0 0 0 0 0 0 0 0	0 0 0 0 0 0 0 0 0 0	0 0 0 0 0 0 0 0 0 0
A	12 12 12 12 12 12 12 12 12 0	0 0 0 0 0 0 0 0 0 0	0 12 12 12 0 0 0 0 0 0	0 0 0 0 0 0 0 0 0 0
B	0 0 0 0 0 0 0 0 0 0	11 12 12 12 12 0 0 0 0 0	11 11 11 11 0 0 0 0 0 0	2 2 2 2 2 2 2 2 2 2

60

A5 Aadd9 A B5 A5<sup>7</sup>B5 A/D A

let ring-----|

T	0 0 0 0 0 0 0 0 0 0	0 0 0 0 0 0 0 0 0 0	0 0 0 0 0 0 0 0 0 0
A	0 0 0 0 0 0 0 0 0 0	2 2 2 2 2 2 2 2 2 2	0 0 0 0 0 0 0 0 0 0
B	0 0 0 0 0 0 0 0 0 0	0 0 0 0 0 0 0 0 0 0	0 0 0 0 0 0 0 0 0 0

Gtr IV *f*

T	0 0 0 0 0 0 0 0 0 0	0 0 0 0 0 0 0 0 0 0	0 0 0 0 0 0 0 0 0 0
A	x x x x x x x x x x	0 7 9 12 12	0 0 0 0 0 0 0 0 0 0
B	x x x x x x x x x x	9 7 9 12 12	7 7 7 7 7 7 7 7 7 7

Gtr IV *f*

T	0 0 0 0 0 0 0 0 0 0	0 0 0 0 0 0 0 0 0 0	0 0 0 0 0 0 0 0 0 0
A	x x x x x x x x x x	9 7 9 12 12	7 7 7 x 7 7 7 7 7 7
B	x x x x x x x x x x	9 7 9 12 12	7 7 7 x 7 7 7 7 7 7



63

G5 G6 B5 A5<sup>VII</sup>

Gtr IV

T  
A  
B

Gtr IV

T  
A  
B

**G** Chorus 2

A A/G A7sus4/G Dadd2/G

65

Gtr IV

T  
A  
B

A/D A G5 D5 3x

67

T  
A  
B

A A/G A7sus4/G Dadd2/G

69

T  
A  
B

71

A/D A G5 D5

T  
A  
B

0 0

0 0 0 0 0 0 0 0 0 0

0 0 0 0 0 0 0 0 0 0

7 7 7 7 7 7 7 7 5 5 5 0 0

7 7 7 7 7 7 7 7 5 5 5 0 0

Gtr I *f*  
P.M.

x 14 14

73

A

A/G

A7sus4/G

Dadd2/G

T

A

B

Full

Full

Full

Full

19 (19) (19) 19 19 (19) 17

17 (17) 21 21

sl.

The image shows a musical score for the song "The Sound of Silence" by Simon & Garfunkel. The score is written for guitar, voice, and piano. The guitar part is in the key of D major (indicated by two sharps) and features a capo on the 5th fret. The chords are A/D, A, G5, and D5. The vocal melody is written in the treble clef, and the piano accompaniment is written in the bass and treble clefs. The piano part includes a bass line with a 1/2 note rhythm and a treble line with a 1/2 note rhythm. The score is marked with "sl." (sostenuto) and "H" (half note).

**H** Outro

77

A5<sup>VII</sup> G5 D5<sup>open</sup> A5<sup>VII</sup> G5 D5<sup>open</sup>

T  
A  
B

T  
A  
B

A5<sup>VII</sup>

79

T  
A  
B

T  
A  
B

Gtr III *f*  
let ring

T  
A  
B

P P P P

Aadd4/D

1

*mp*  
N.H. A.H.

**T**

**A** 7 7 7 7 7 7

**B** 7 7 7 7 7 7

E

Gtr III  
let ring

N.H.

**T** 5 5 0 5 0 5 5 (0) 0

**A** 5 5 0 5 5 0 5

**B** 0

P P P

